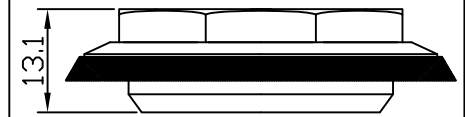


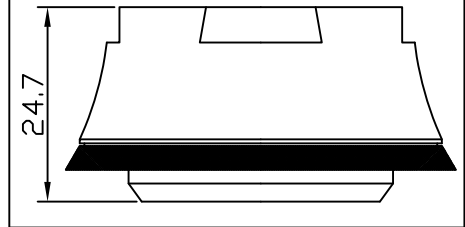
堆積高度(STACK HEIGHT)=23.7±1mm

可選配之上塞高度  
(TOP COVER IS OPTIONAL)

型號(MODEL NO.): H171L



型號(MODEL NO.): H171H



NO.	零件名稱 PART NAME	材質 MATERIAL	圖號 DRAWING NO.	台量 Q'TY	尺寸 DIM. DESCRIPTION
1	鋁防水上迫緊 LOCK NUT	鋁合金 6061/T6	815-1	1	BC 1-1/8" x26T
2	有領華司 KEY WASHER	碳鋼 STEEL	SK3402	1	1-1/8"
3	鋁上塞 ADJUSTING CONE	鋁合金 6061/T6	118-3	1	BC 1-1/8" x26T
4	防塵蓋 DUST-RESISTED COVER	塑膠 NYLON	118-8	1	
5	半卡式碗 SEMI-CARTRIDGE STEEL CUPS	碳鋼 STEEL	148-4/5	2	∅44±0.15
6	下塞 CROWN RACE	碳鋼 STEEL	146-6	1	∅30±0.1

- 半隱藏式車頭碗組
- 1-1/8" (28.6mm) 有牙前叉立管(BC 1-1/8" x26T)
- 車頭管 內徑/外徑=44/50mm
- 鋁合金(6061)上迫緊及上塞
- 半卡式(預卡式)鐵上下碗
- 鐵下塞

- Semi-integrated headset
- For 1-1/8" threaded steerer(BC 1-1/8" x26T)
- Headtube ID./OD. = 44/50mm
- 6061/T6 cnc machined lock nut and adjusting cone with seals
- Semi-cartridge steel cups
- Cold-forged steel crown race

單位 UNIT	mm	比例 SCALE	1:1	日期 DRAWING DATE	2001.03.09	角法 VIEW	
型號 ITEM NO.	NECO 171L/171H						版次(REV):A
品名 PART NAME	H171L/H171H 組立圖(Assembly Drawing)						
規格 DIMENSION	∅25.4x44/50x30						
圖號 PART NO.	H171L(H171H)-組立圖-A						
誌慶工業股份有限公司							